

# ARCHER-ARO RT SERIES

## On-Line Rackmount/Tower

1~3KVA



Two directions LCD display

### مشخصات

#### • تکنولوژی On-Line, Double Conversion

- قابل استفاده به دو صورت رکمونت و تاور
- دارای صفحه نمایش چرخشی (در حالت رکمونت و تاور)
- مجهز به کلید قطع اضطراری (EPO)
- دارای راندمان بالا
- کنترل دیجیتال (DSP)
- ضریب قدرت خروجی ۰/۹
- قابلیت افزایش قدرت شارژر
- تست خودکار زمان راه اندازی
- دارای حالت فرکانس قابل تنظیم
- قابلیت تعویض باتری بدون خاموش کردن دستگاه
- قابلیت روشن شدن بدون برق شهری (Cold Start)
- دارای حالت ECO Mode به منظور افزایش راندمان
- قابلیت قطع بارهای غیر ضروری در زمان استفاده از باتری
- قابلیت نصب کارت SNMP با پورت RS232 و USB



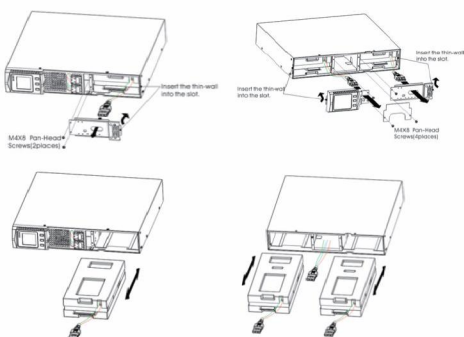
Optional Socket



Mini dry contact card



SNMP



Easy for maintenance, hot-swappable battery



Multifunctional bracket



Rack-Tower convertible



Battery Cabinets

## Technical Specifications:

MODEL		ARO 1101 S/H-RT	ARO 1101.5 S/H-RT	ARO 1102 S/H-RT	ARO 1103 S/H-RT
Capacity (VA/Watts)		1000 / 900	1500 / 1350	2000 / 1800	3000 / 2700
Phase		Single phase with ground			
INPUT					
Nominal voltage		200/208/220/230/240Vac			
Input voltage range		110~300Vac @ 60% load, 160~300Vac @ 100% load			
Frequency range		45~55Hz/55~65Hz(Auto-detect)			
Power factor		≥0.99 @Nominal voltage(100% load)			
OUTPUT					
Output voltage		200/208/220/230/240Vac			
Power factor		0.9			
Voltage regulation		±1%			
Frequency range (Synchronized range)		45~55Hz/56~64Hz			
Frequency range (Batt.mode)		50Hz/60Hz±0.1Hz			
Current crest ratio		3:1			
Harmonic distortion		≤3% THD(Linear load) ≤6% THD(Non-linear load)			
Transfer time	AC to DC	Zero			
	Inverter to bypass	4ms(Typical)			
Waveform		Pure sinewave			
EFFICIENCY					
AC mode		88%	88%	89%	90%
Battery mode		83%	83%	85%	86%
BATTERY					
Standard model	Battery type	12V/9AH	12V/9AH	12V/9AH	12V/9AH
	Numbers	3	3	6	8
	Backup time	Estimated remaining time displayed on the LCD			
	Typical recharging time	4 hours recover to 90% capacity			
	Charging current(max.)	1.0A			
Long run model (Only HV model)	Charging voltage	41.1Vdc ±1%	41.1Vdc ±1%	82.2Vdc ±1%	109.6Vdc ±1%
	Battery numbers	Depending on the capacity of external batteries			
	Charging current(max.)	6A/12A(Double board)			
	Charging voltage	41.1Vdc ±1%	41.1Vdc ±1%	82.2Vdc ±1%	109.6Vdc ±1%
INDICATORS					
LCD		Load level,Battery level,AC mode,Battery mode,Bypass mode,and Fault indicators			
ALARM					
Battery mode		Beeping every 4 seconds			
Battery low		Beeping every second			
Overload		Beeping twice every second			
Fault		Continuously beeping			
PHYSICAL					
Standard model	Dimension,D×W×H(mm)	430×440×86.5		552×440×86.5	710×440×86.5
	Net weight(kgs)	17.8	17.8	25.1	28.3
Long run model (Only HV model)	Dimension,D×W×H(mm)	430×440×86.5		552×440×86.5	
	Net weight(kgs)	8.2		10.9	11.3
ENVIRONMENT					
Humidity		20-90% RH @ 0-40°C (Non-condensing)			
Noise level		<50dB @ 1 Meter			
MANAGEMENT					
Smart RS232/USB		Supports Windows® 2000/2003/XP/Vista/2008 Windows® 7/8 Linux,FreeBSD and MAC			
Optional SNMP		Power management from SNMP manager and web browser			
BATTERY BANK					
Model		ARO-BB 1101 RT	ARO-BB 1101.5 RT	ARO-BB 1102 RT	ARO-BB 1103 RT
Battery type& Max.quantity		12V/9Ah×3	12V/9Ah×3	12V/9Ah×6	12V/9Ah×8
PHYSICAL OF BATTERY BANK					
Unit Dimensions D×W×H (mm)		430×440×86.5(2U)	430×440×86.5(2U)	552×440×86.5(2U)	710×440×86.5(2U)
Weight (Kg)		15	15	28	40

Specifications are subject to change without prior notice.

# ARCHER-ARO RT SERIES

## On-Line Rackmount/Tower

6~10KVA



### مشخصات

- تکنولوژی On-Line, Double Conversion
- قابل استفاده به دو صورت رکمونت و تاور
- دارای صفحه نمایش چرخشی (در حالت رکمونت و تاور)
- نمایشگر جامع جهت نمایش وضعیت و پارامترهای یو پی اس
- مجهز به کلید قطع اضطراری (EPO)
- دارای بای پس اتوماتیک
- کنترل دیجیتال (DSP)
- ضریب قدرت خروجی ۰/۹
- تست خودکار زمان راه اندازی
- دامنه وسیع ولتاژ و فرکانس ورودی
- مجهز به سیستم اصلاح ضریب قدرت (PFC)
- دارای حفاظت در برابر افزایش یا کاهش ولتاژ ورودی
- قابلیت روشن شدن بدون برق شهری (Cold Start)
- دارای حالت ECO Mode به منظور افزایش راندمان
- طراحی بر اساس ولتاژ بهینه باتری بر حسب توان یو پی اس
- تکنولوژی کنترل دیجیتال قسمت های شارژر، رکتیفایر، اینورتر
- قابلیت اتصال کارت SNMP و کارت رله (انتخابی)
- دارای پورت ارتباطی USB, RS232



Control Panel



The LCD panel can be rotated



Battery Cabinets  
(Optional)



## Technical Specifications:

MODEL		ARO 1106 S/H-RT	ARO 1110 S/H-RT
Capacity (VA/Watts)		6K / 5.4K	10K / 9K
INPUT			
Nominal voltage		220/230/240Vac(L+N+PE)	
Operating voltage range		120~276Vac	
Operating frequency range		45~55Hz/54~66Hz±0.5Hz	
Power factor		≥0.99	
Bypass voltage range		220V: +25%(optional +10%,+15%,+20% ) 230: +20% (optional +10%,+15%) 240: +15% (optional +10%) Min. voltage: -45% (optional -20%,-30%)	
ECO range		Same as bypass	
Bypass frequency range		Frequency protection range:±10%	
Harmonic distortion (THDi)		≤3%(100% linear load)	
Generator input		Support	
OUTPUT			
Output voltage		220/230/240Vac	
Power factor		0.9	
Voltage regulation		±2%	
Frequency	Line mode	±1%/±2%/±4%/±5%/±10% of the rated frequency(optional)	
	Bat. mode	50/60 (±0.1)Hz	
Crest factor		3:1	
Harmonic distortion (THDv)		≤2% with linear load ≤5% with non linear load	
Waveform		Pure sinewave	
Efficiency		>93.5%	
BATTERY			
Battery voltage		Optional Voltage: ±96/±108/±120Vdc	
Typical recharging time		6~8 hours (to 90% of full capacity)	
Back up time		Long run unit depends on the capacity of external batteries Estimated remaining time displayed on the LDC	
Charging current		Maximum current 10A; Charging current can be set according to battery capacity installed.	
SYSTEM FEATURES			
Transfer time		Utility to battery : 0ms; Utility to bypass: 0ms	
Overload	Line mode	Load≤110%: last 60min; ≤125%: last 10min; ≤150%: last 1S; >150% turn to bypass mode	
	Bypass mode	40A(Input breaker)	60A(Input breaker)
Short circuit		Hold Whole System	
Overheat		Line mode: Switch to bypass; Backup mode: Shut down UPS immediately	
Battery low		Alarm and switch off	
Self-diagnostics		Upon power on and software control	
EPO (optional)		Shut down UPS immediately	
Battery		Advanced battery management	
Noise suppression		Complies with EN62040-2	
Audible & Visual alarms		Line failure, Battery low, Overload, System fault	
Status LED & LCD display		Line mode, Backup mode, Eco mode, Bypass mode, Battery under voltage, Battery bad, Overload & UPS fault	
Reading on the LCD display		Input voltage, Input frequency, Output voltage, Output frequency, Load percentage, Battery voltage, Inner temperature & Remaining battery backup time	
Communication interface		USB,RS232, Parallel port, SNMP card/Relay card (optional)	
ENVIRONMENT			
Operating temperature		0~40℃	
Storage temperature		-25~55℃	
Humidity range		0~95% (Non condensing)	
Altitude		<1500m	
Noise level		<55dB	
PHYSICAL			
Dimension W×H×D (mm)		443×131×580(3U)	
Net weight (kg)		23	25
STANDARDS			
Safety		IEC/EN62040-1,IEC/EN60950-1	
EMC		IEC/EN62040-2,IEC61000-4-2,IEC61000-4-3,IEC61000-4-4, IEC61000-4-5,IEC61000-4-6,IEC61000-4-8	
BATTERY BANK			
Model		AR-BB 1106/1110-RT	
Battery type& Max.quantity		7Ah×20	9Ah×20
PHYSICAL OF BATTERY BANK			
Dimensions D×W×H (mm)		720×443×131(3U)	
Net weight (kg)		56	62

Specifications are subject to change without prior notice.